

General Ingredients

Maple Syrup 25kg

Product ID:

MAPL020

Product Name:

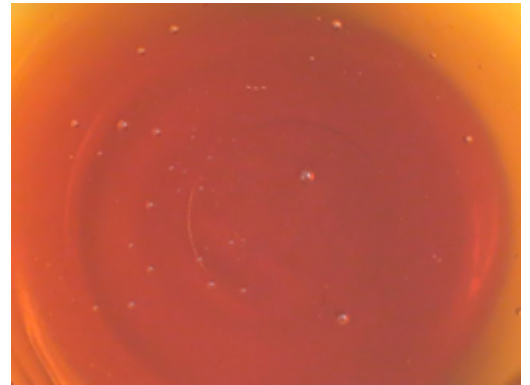
Maple Syrup 25kg

Country of Origin:

Made in Australia from Imported and Local Ingred

Description:

A clear light brown liquid with a thick syrup-type consistency and a distinct maple flavour and aroma when diluted as recommended. The colour of the concentrate may vary with age and raw materials.



Intended Use:

Food Ingredient

Ingredient Listing:

Glucose Syrup (30 – 60%) [Water, Dextrose, Maltose, Other Saccharides etc...

Pack Size: 25kg

Net Weight: 25

Per Pallet: 32

Product specifications subject to change without notice.

Nutritional Information: Amount per 100g

Energy (kj)	1,748
Protein (g)	0.0g
Fat (g)	0.0g
Saturated Fats (g)	0.0g
Total Carbohydrates (g)	99.9g
Sugars (g)	51.7g
Sodium (mg)	31.9mg

