

# General Ingredients

## Maple Syrup 25kg

**Product ID:**

MAPL020

**Product Name:**

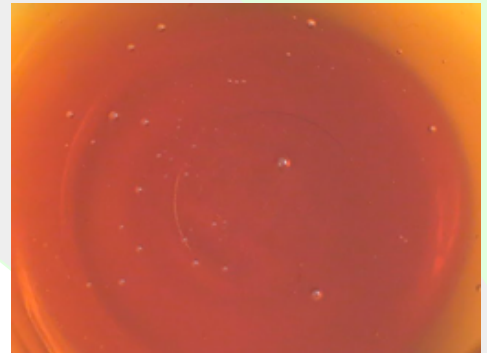
Maple Syrup 25kg

**Country of Origin:**

Made in Australia from Imported and Local Ingred

**Description:**

A clear light brown liquid with a thick syrup-type consistency and a distinct maple flavour and aroma when diluted as recommended. The colour of the concentrate may vary with age and raw materials.

**Intended Use:**

Food Ingredient

**Ingredient Listing:**

Glucose Syrup (30 – 60%) [Water, Dextrose, Maltose, Other Saccharides etc...]

**Pack Size:** 25kg

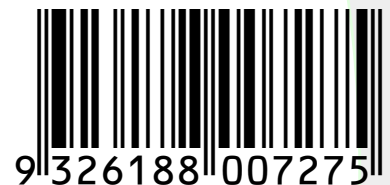
**Net Weight:** 25

**Per Pallet:** 32

Product specifications subject to change without notice.

**Nutritional Information: Amount per 100g**

Energy Kj	1,748
Protein	0.0g
Total Fat	0.0g
Saturated Fat	0.0g
Total Carbohydrate	99.9g
Sugar	51.7g
Dietry Fibre	0.0g
Sodium	31.9mg



**QUALITY INGREDIENTS TO THE FOOD INDUSTRY**